

## MIKE C-MAP Installation Note

This note describes how to install MIKE C-MAP Release 2011 and the Jeppesen Marine C-MAP Professional+ digital chart database.

Congratulations with your MIKE C-MAP software package holding the following:

### DHI:

- MIKE by DHI Release 2011 DVD (or zipped MIKE C-MAP installation files if downloaded from the MIKE by DHI web site or ftp server)
- DHI USB dongle (if this is your first MIKE by DHI product)
- DHI Software license file, DhiLicense.dat (send by e-mail)
- User Guide for MIKE Zero Add-on Modules
- DHI Software License and Maintenance Agreements (See also Annex A in this)

### Jeppesen Marine:

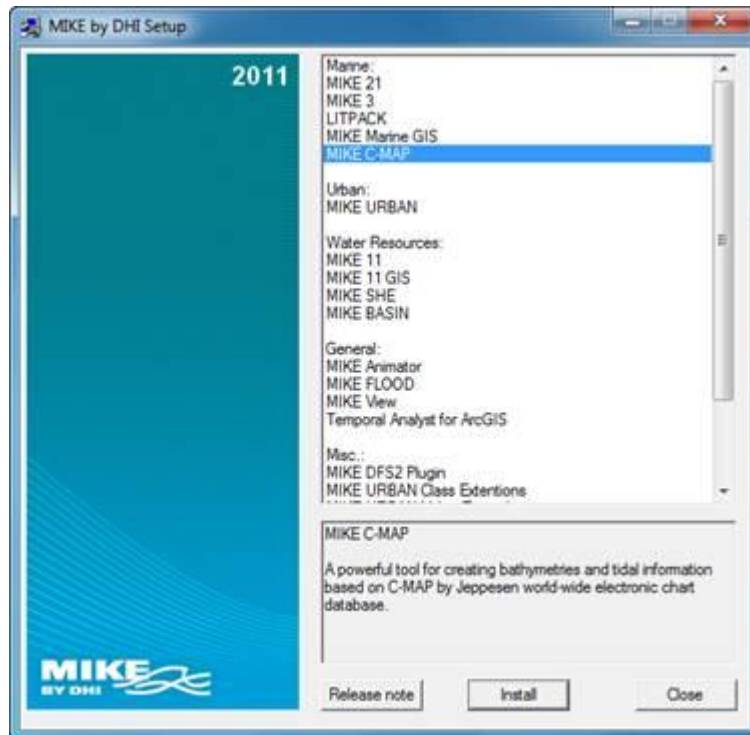
- Jeppesen USB dongle – Aladdin eToken PRO (Java 72k)
- C-MAP license file, password.usr (send by e-mail)
- Jeppesen Marine C-MAP Professional+ digital chart DVD

To optimize the view of the displayed data on your pc screen you will during the installation be asked to enter the size of your pc screen (inches), and likewise when starting MIKE C-Map the first time to measure the size (in millimeters) of a white box displayed on the screen. Please have a ruler ready as well.

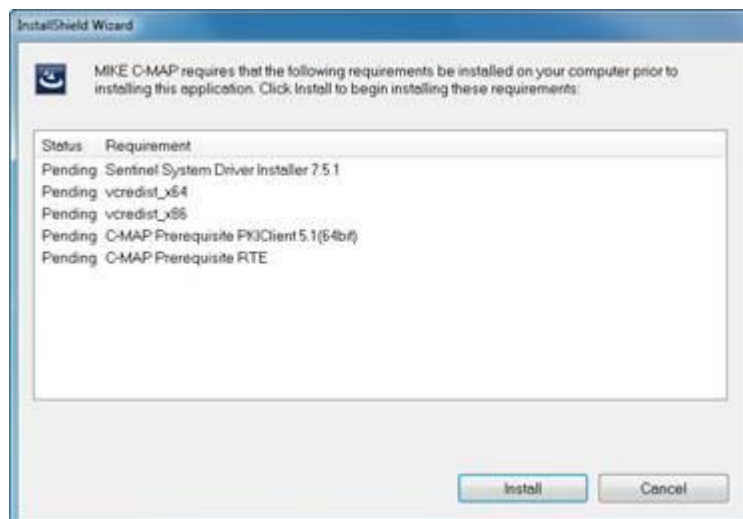
A step-by-step guide on the installation of MIKE C-MAP is given below.

1. Insert the C-MAP Professional+ digital chart DVD and copy to your hard disk
2. Copy license files from e-mails to your hard disk
3. Close down all Windows programs currently running on your computer
4. Make sure that your pc is connected to the internet
5. Insert the Jeppesen USB dongle
6. Click 'No' to install drivers if proposed by Windows
7. Insert the MIKE by DHI Release 2011 DVD or start the setup.exe file found in the downloaded folder

8. Select MIKE C-MAP from the Setup dialogue and press 'Install':



9. An install wizard appears with information on pre-installations required, ie drivers for MIKE Zero, MIKE C-MAP and C-MAP:



Press 'Install'.

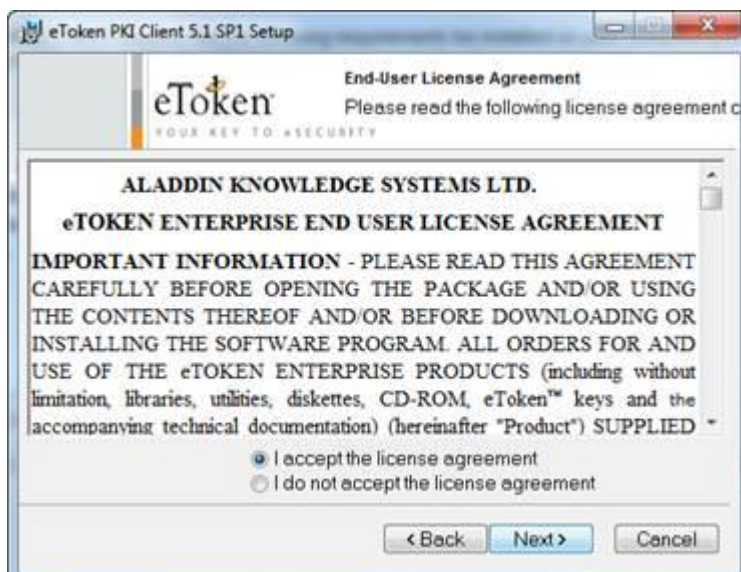
After installation of generic drivers for MIKE Zero the specific drivers for C-MAP application will commence and the following dialogues appears:



Press 'Next'



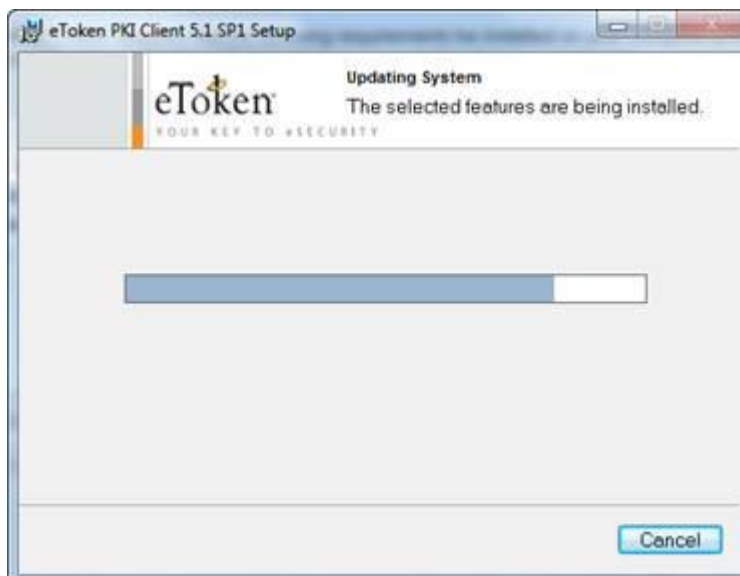
Press 'Next'



Read and tick 'I accept the licence agreement' (if you want to continue) and press 'Next'



Accept proposed destination folder or browse and press 'Next'



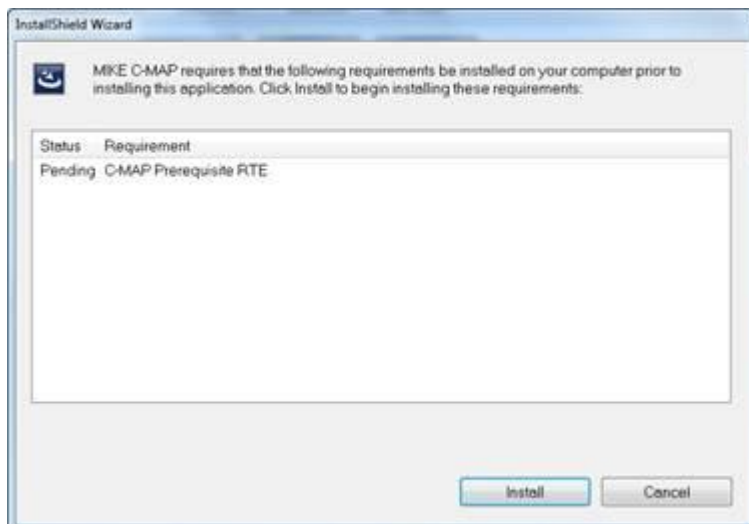
Wait...



Click 'Finish'



Click 'Yes'



The install wizard appears with the last pre-installation item. Press 'Install'

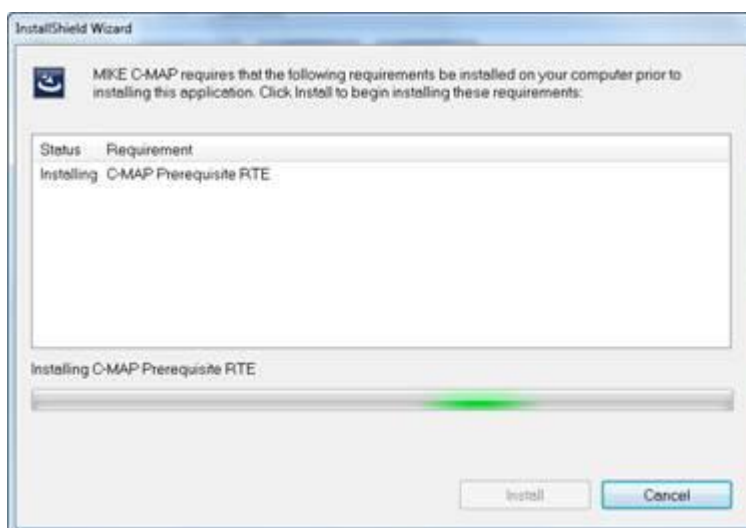


Press 'Next'

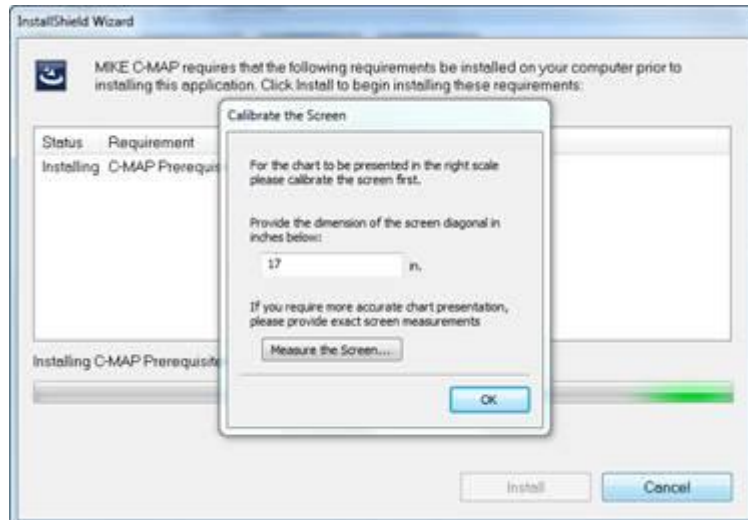


Accept proposed installation folder or browse. Press 'Next'

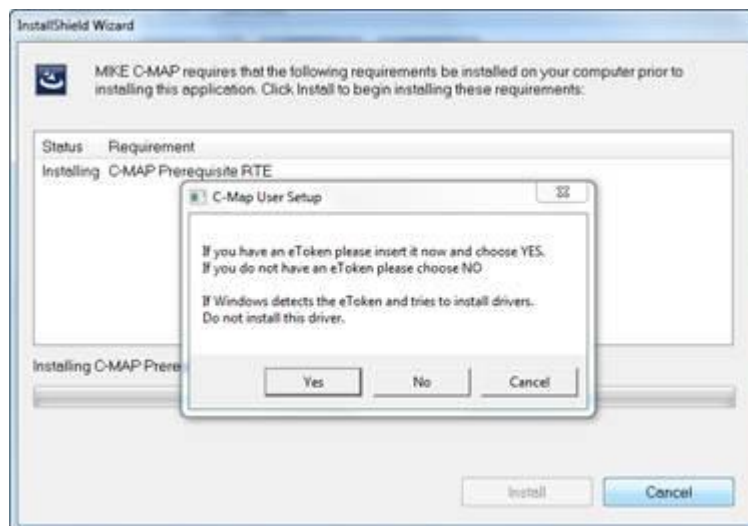
A 'Confirm Installation GUI' appears – click Install



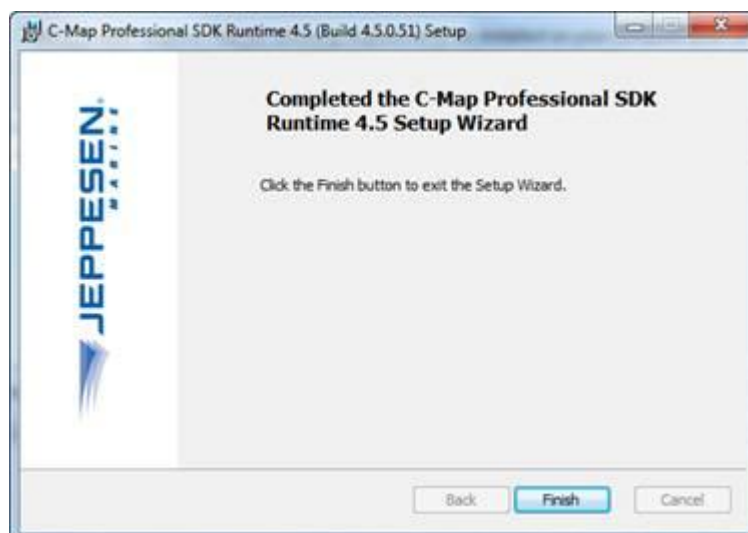
Wait...



Insert the size of your screen (diagonal in inches) and press 'OK'

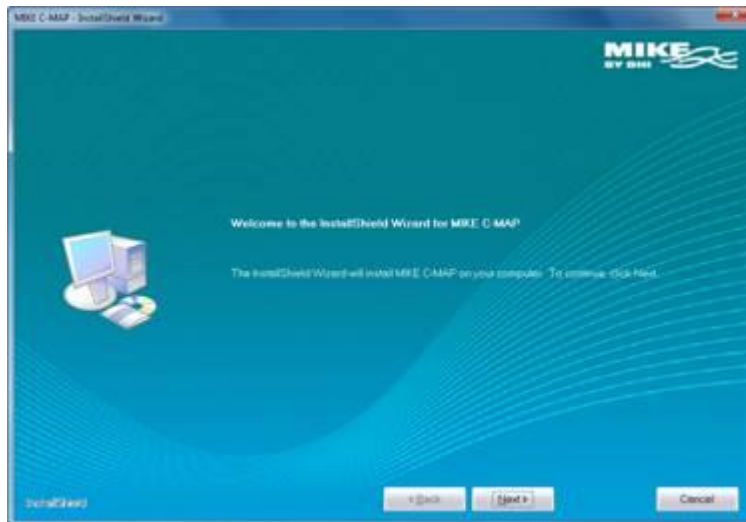


Click 'Yes'

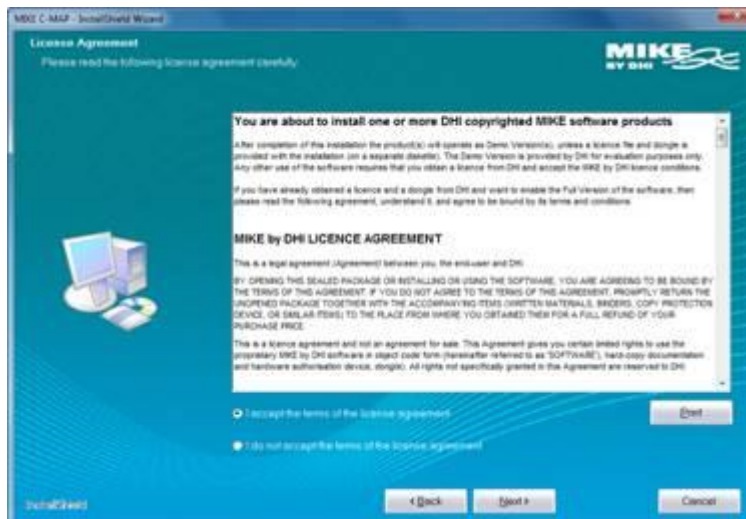


Press 'Finish'

10. Now the MIKE C-MAP install wizard reappears:

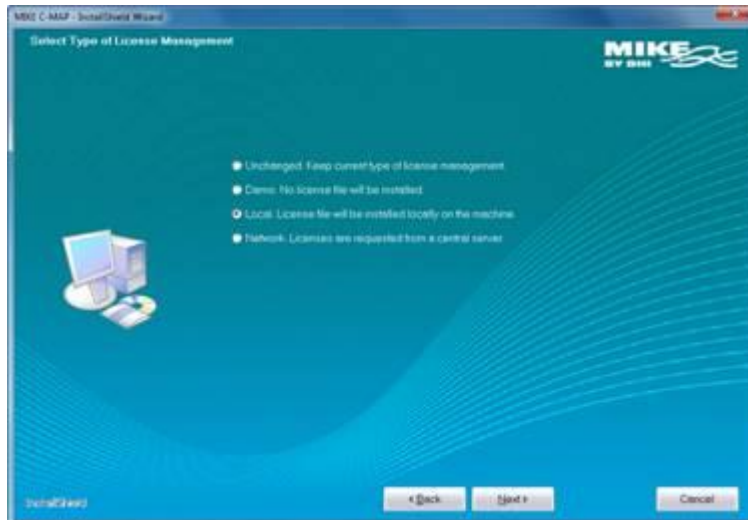


Click 'Next'

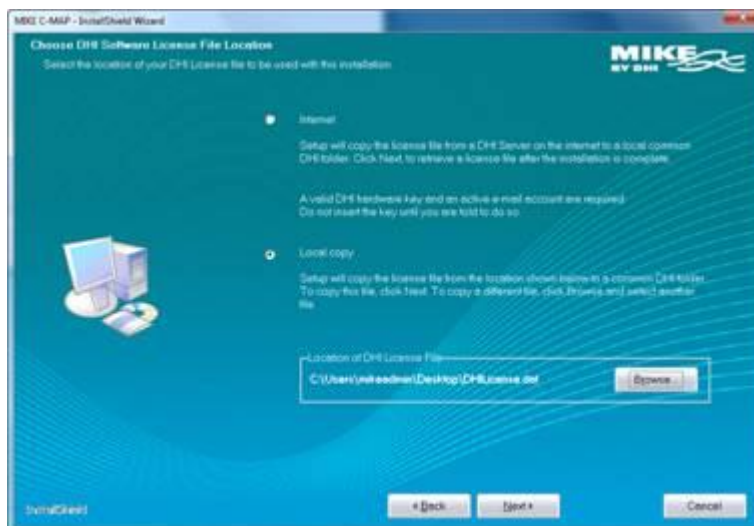


Read License Agreement and tick 'I accept the terms of the license agreement' to continue and click 'Next'

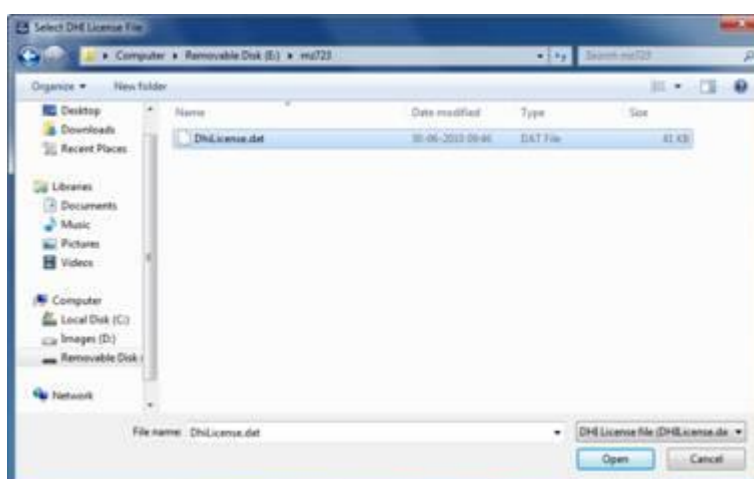
INSERT YOUR DHI DONGLE!!!!



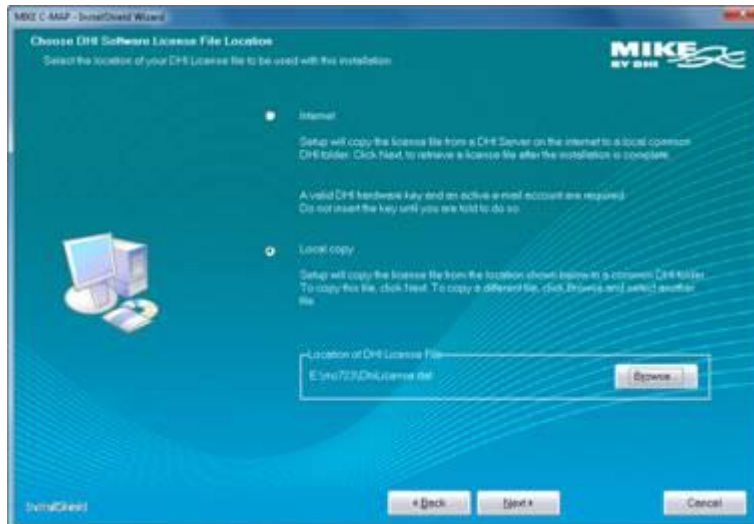
Select 'Local license' as type of license management and press 'Next'



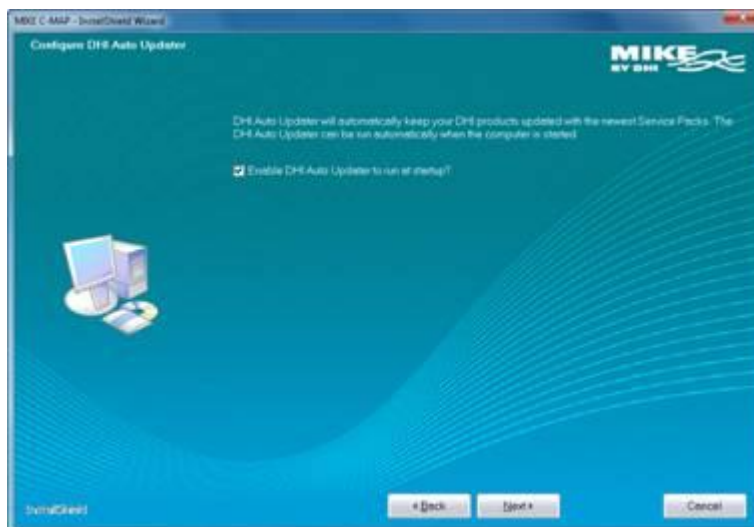
Select 'Local copy' and browse for the location of your DHI license file:



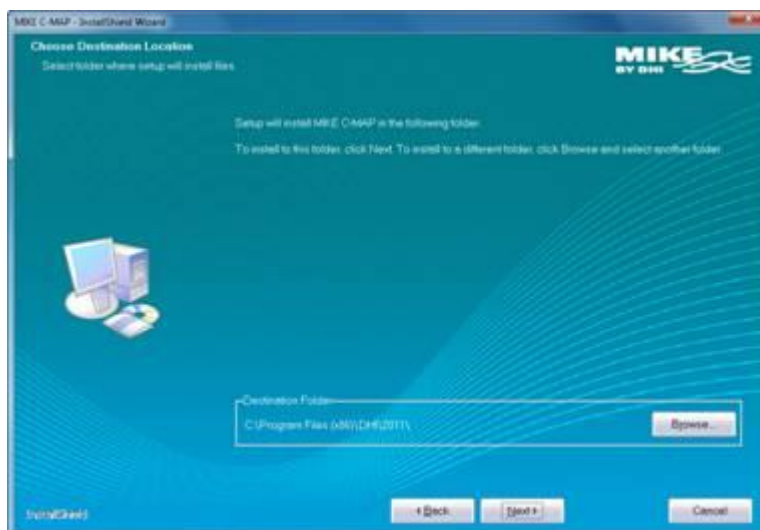
(example from testing) Press 'Open'



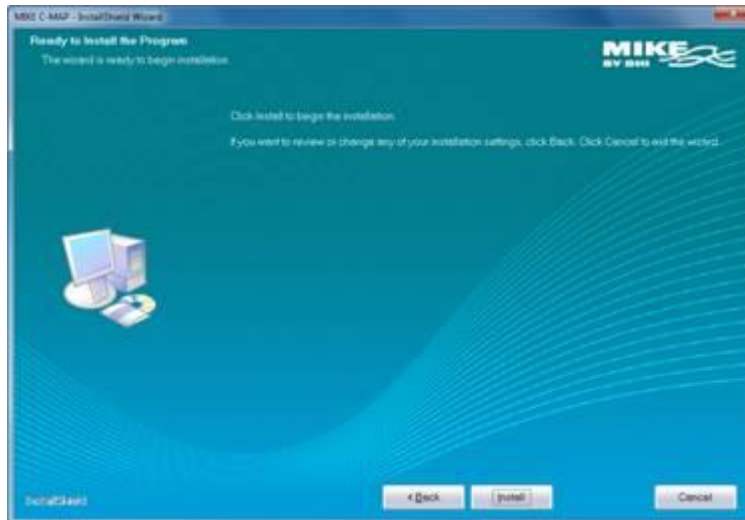
Press 'Next'



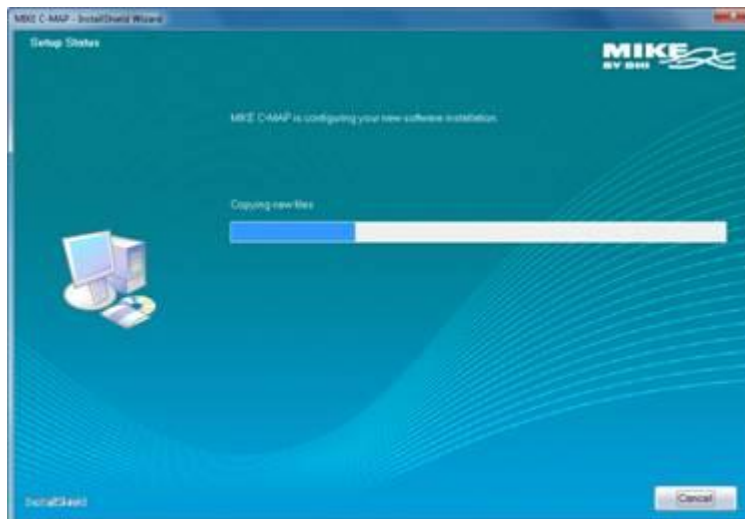
Tick 'Enable DHI Auto Updater to run at startup' if you want Service Packs to be installed automatically. Press 'Next'



Accept proposed destination folder or browse for another. Press 'Next'

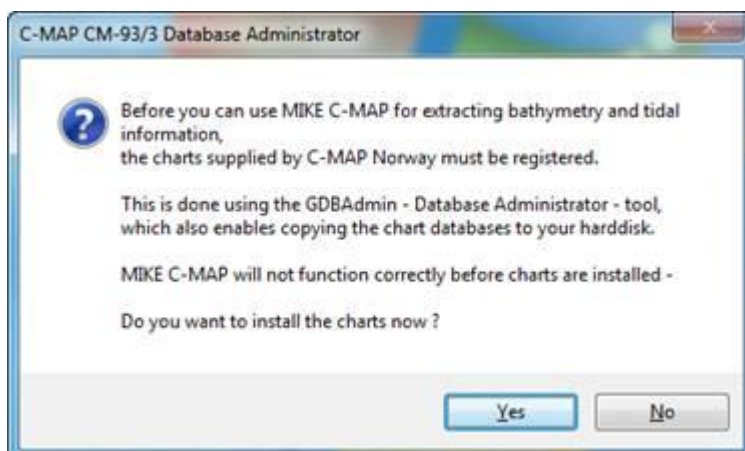


Press 'Install'

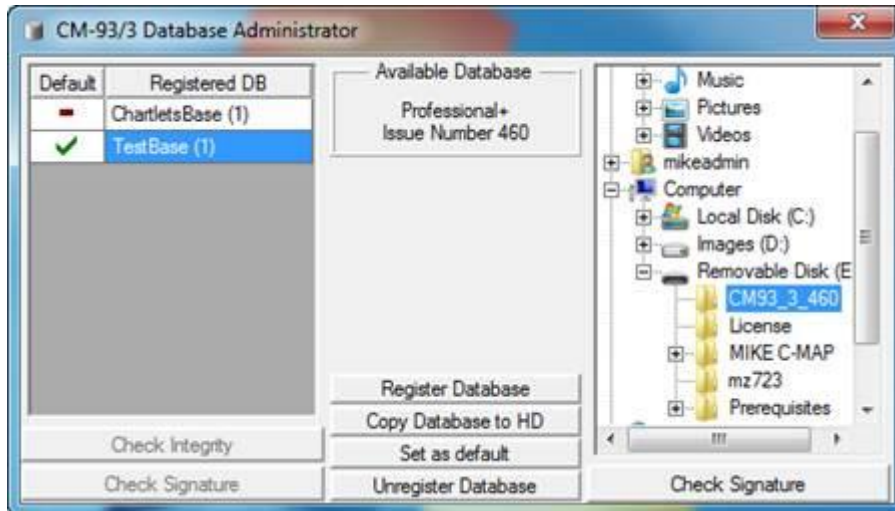


Wait until the C-MAP chart database administrator dialogue appears...

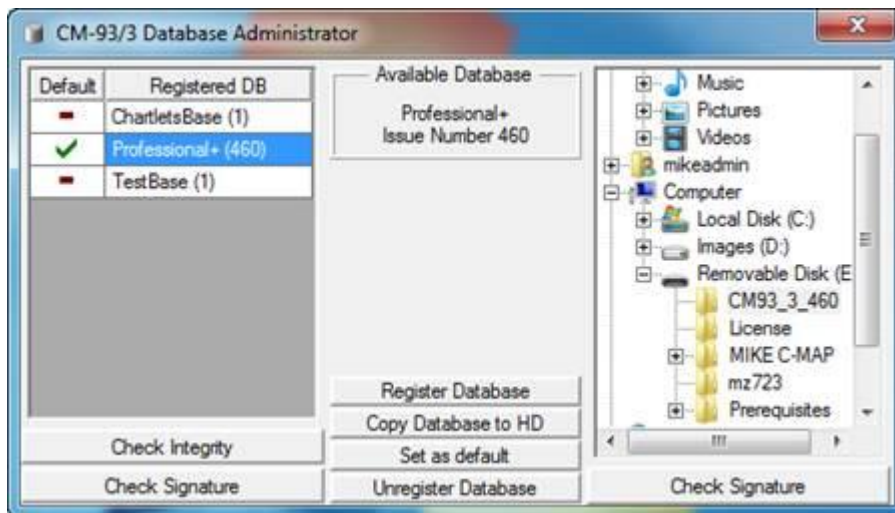
#### 11. C-MAP chart database registration:



Click 'Yes'



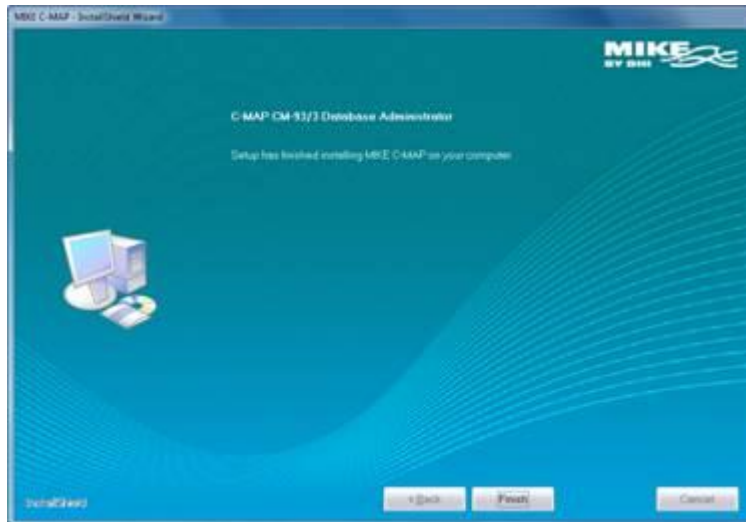
Browse to the location where you have installed the C-MAP Professional+ database (here example from testing) or press 'Copy Database to HD' if not done in advance.



Register database (example here is the Professional+ version 460)

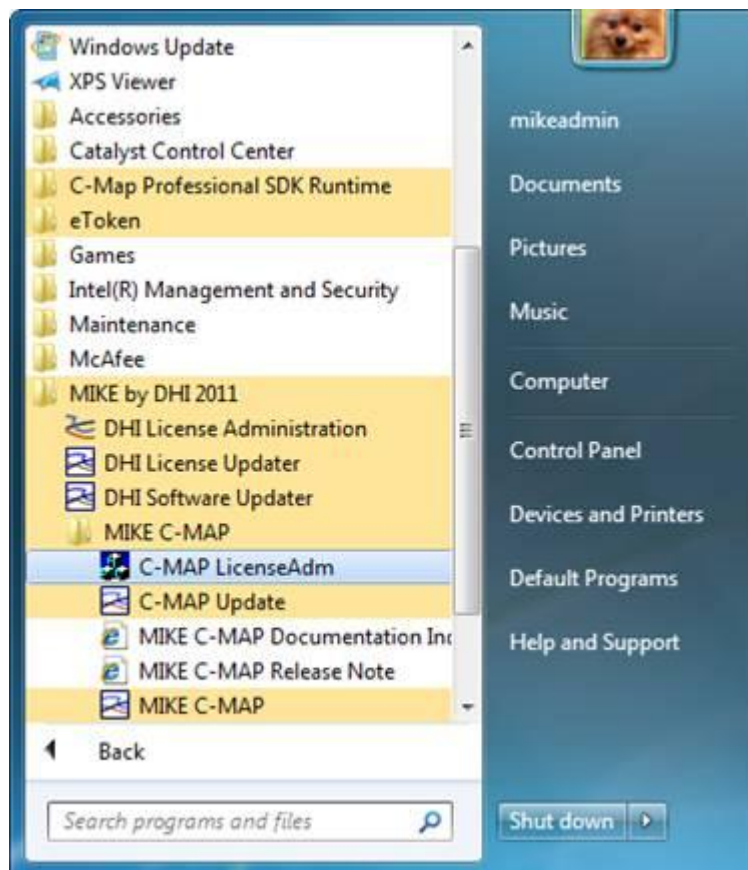


Press 'Yes'

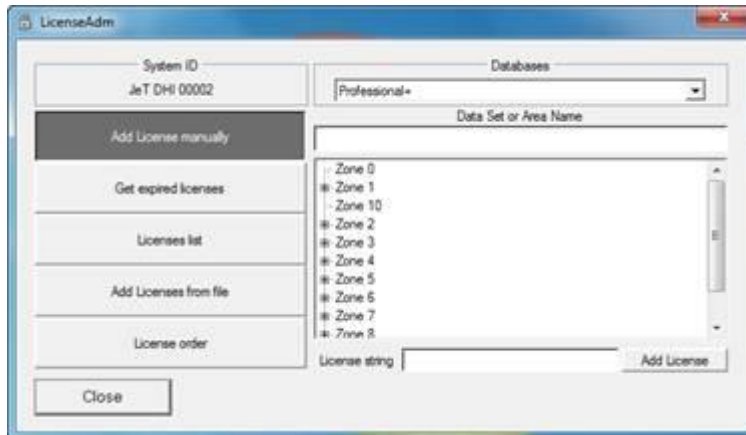


Press 'Finish'

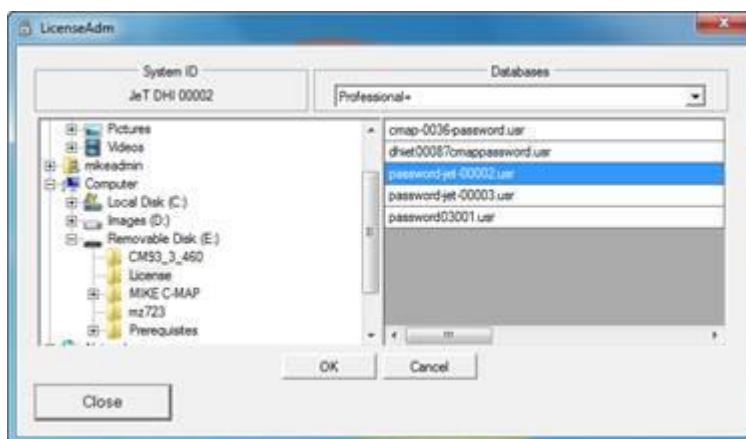
12. Press the 'Start' button on your PC and browse to the C-MAP LicenseADM in the MIKE C-MAP subfolder within the MIKE by DHI 2011 folder:



Click 'C-MAP LicenseADM'



Click 'Add license from file'



Browse to location of your C-MAP license file



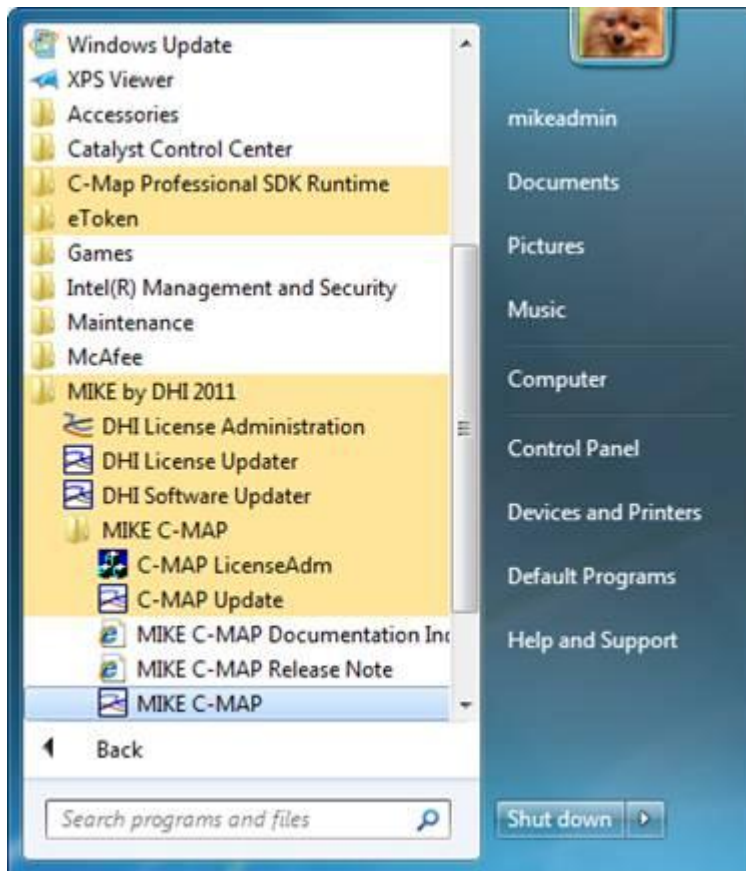
Click 'Yes'



and 'Close'

- Before Start using MIKE C-MAP please ensure that the DHI license is running (using the DHI License Administration).

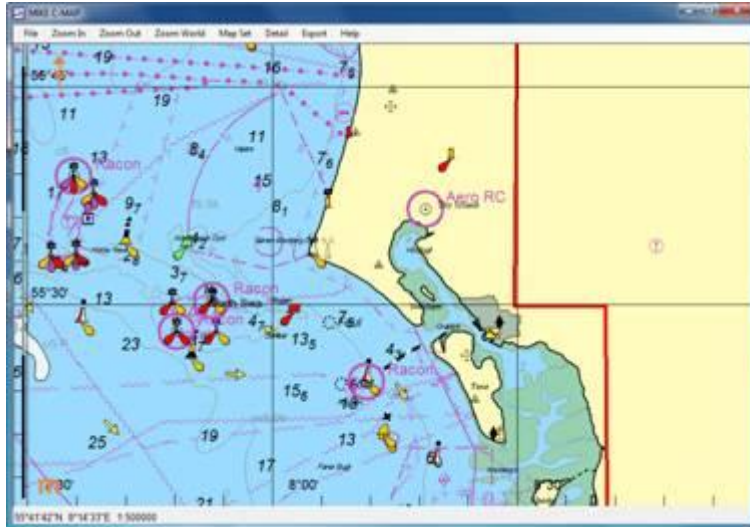
14. When using MIKE C-MAP the first time you have to calibrate the screen resolution for extracted data display, i.e. if not already done in Step 9. Start->Programs->MIKE by DHI 2011->MIKE C-MAP->MIKE C-MAP



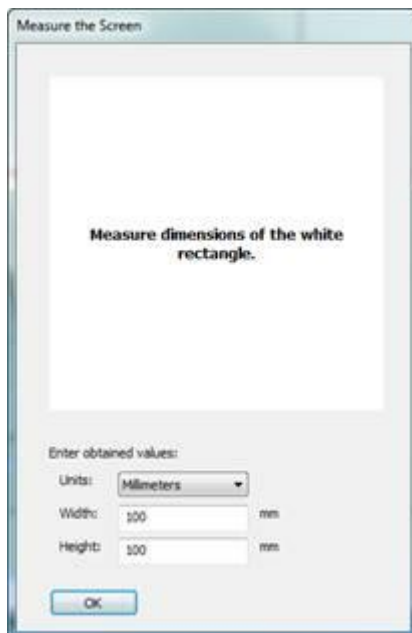
Click 'MIKE C-MAP'



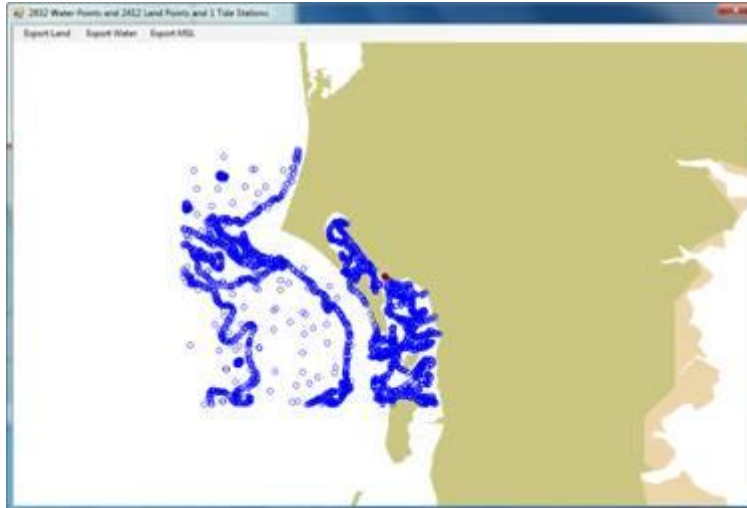
Pan to the area of interest:



Select 'Export' in the top menu:

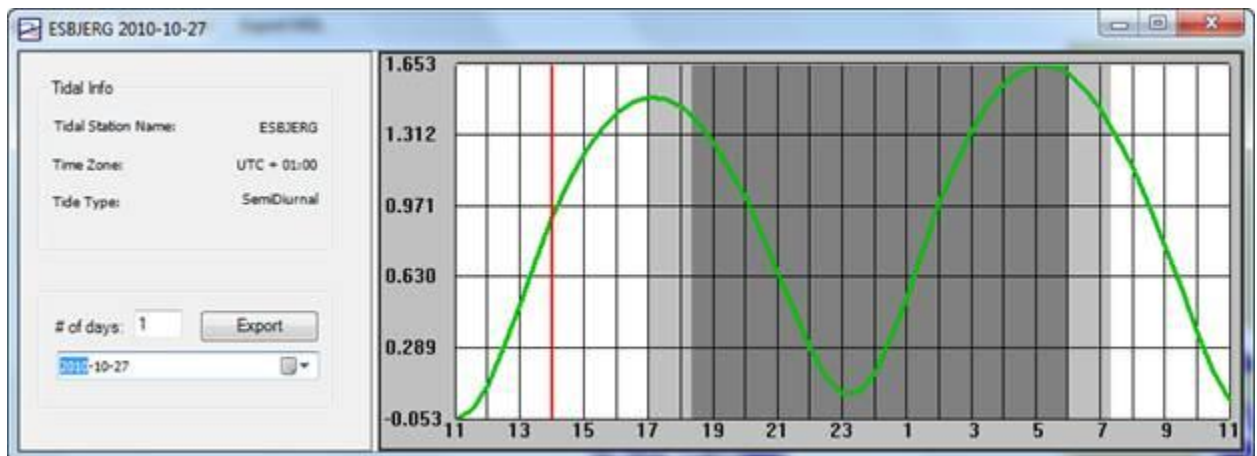


This 'Measure the Screen' dialogue appears the first time you are using MIKE C-MAP and it serves to optimize the view of the extracted data on the screen (i.e. to utilize full screen dimension). Measure the width and height of rectangle and press 'OK'



This is an example of how the extracted data are displayed if you do not measure the rectangle, i.e. the extracted data (e.g. blue points) are displayed only in part of the window.

The red dot is a tidal station and when you press this:



The predicted tidal elevation appears

Attributes	
DataSet filename	Z12A/29C.C00
Chart Title	ESBJERG - HANSTHOLM MED OFFSHORE OLIE - OG GASFELTER
DataSet source type	Non official
Source identification code	53C
Source producing agency	Kort-Og Matrikelstyrelsen (KMS) - Denmark
Producing agency	Jeppesen Italia S.r.l.
Scale	375000
Last update applied date	14.05.2010
Connected upto	04.06.2010
Issue date	29.01.2010
Edition number	6
Total number of updates	8
Update number (embedded into ENC)	8
Archive Code	10-0129C
Horizontal Datum	WGS 84
Horizontal Datum Source	WGS 84
Len Horizontal Datum Shift	0.00000'
Lat Horizontal Datum Shift	0.00000'
Vertical Datum	Mean sea level
Sounding Datum	Mean low water springs
Level	3
Intended usage	2
Product specification code	1

When you are in the chart view mode and right click the mouse information about the chart can be read.

For more information about how to use MIKE C-MAP please refer to the User Guide.